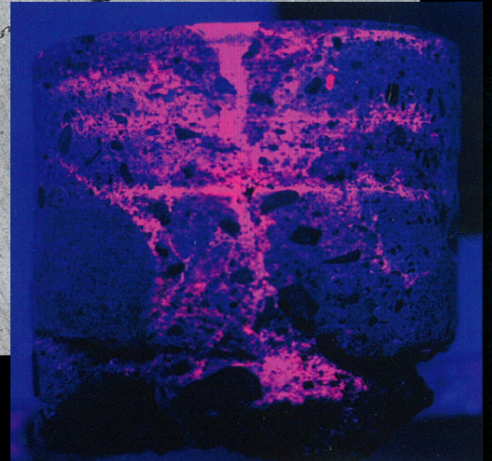
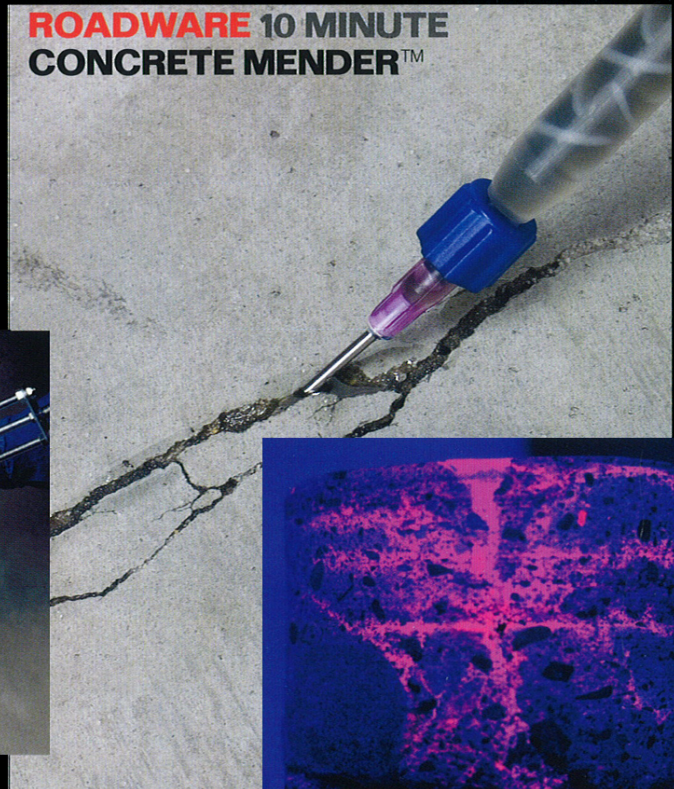


ROADWARE CONCRETE REPAIR PRODUCTS

ROADWARE 10 MINUTE
CONCRETE MENDER™



ROADWARE
MICRODOWELING
TECHNOLOGY

Road-tough repairs for concrete floors, decks, slabs and surfaces. Just flood cracks, spalls, joints, or holes with Roadware 10 Minute Concrete Mender™, MatchCrete™, or Roadware 10 Minute Flexible Cement II.™

In minutes you'll be back in service with a tough polymer concrete that stays in place permanently.



MatchCrete™

ROADWARE MatchCrete™ CLEAR



Roadware MatchCrete™ Clear is a two component aliphatic polyurethane for repairing cracks, spalls, and joints in concrete subject to UV exposure from sunlight. This material is clear in appearance when applied and cured. Colored sand and pigments may be added to create color stable repairs that match most any decorative or shade of concrete surface. MatchCrete™ Clear will not significantly change color with exposure to sunlight over time.

Match colors.

By adding small amounts of dry color pigment and sand, many different colors can be made. Use colored sand for deeper color effect.

Exterior Repairs

MatchCrete™ Clear cures clear and will stay clear under sunlight. MatchCrete™ Clear is a structurally solid material. Use caution when repairing exterior concrete or re-cracking may occur.

Polished Concrete

MatchCrete™ Clear may be polished in several hours. Use before or after polishing for repairs that will not distract from the polished concrete look.

Moisture

Concrete and sand need to be surface dry before application.



Exposed Aggregate

MatchCrete™ Clear cures clear so repairing exposed aggregate concrete is easy.



71105 50ml cartridge w/needle tip
5150 50ml Application Gun
71300 300x300ml cartridge
71020 Two Gallon Kit
1036 Static Mixer SQ 24 element
5300 600ml Application Gun

ROADWARE FLEXIBLE CEMENT II™



Exterior Repairs

Use Flexible Cement II™ repair cracks and protect control joints in parking structures, bridge decks, loading docks, runways, and many types of structural concrete.

Control Joints

Use in industrial floors to protect saw-cut control joints from wheel traffic damage.

Cove Joints

Use Flexible Cement II™ to seal cove joints where the floor meets a structural wall.

Electrical Poding

Seal electrical loops and embedded lighting systems.

Thresholds

Repair concrete thresholds with high thermal differentials.

Moisture

Flexible Cement II™ is tolerant of surface moisture when applied. Concrete should be as dry as practical to insure a good bond.

Roadware Flexible Cement II™ is a semi-flexible polyurethane for repairing low movement cracks and control joints.

High Traffic

Repairs are tough and can handle heavy industrial traffic.



Concrete Bonding

Flexible Cement II™ is an excellent flexible adhesive for bonding metal, wood, and synthetic materials to concrete. Use to bond moldings and tack strips to concrete floors. Bonds asphalt to concrete.

91105 50 ml cartridge w/needle tip
5150 50ml Application Gun
91300 300x300ml cartridge
91020 Two Gallon Kit
91050 Ten Gallon Kit
1036 Static Mixer SQ 24 element
5300 600ml Application Gun

SURECRETE INC.

19705 Scriber Lake Rd, Ste. 103, Lynnwood, WA 98036
www.surecrete.com • 206. 523.1233